
IMAGES IN CLINICAL MEDICINE

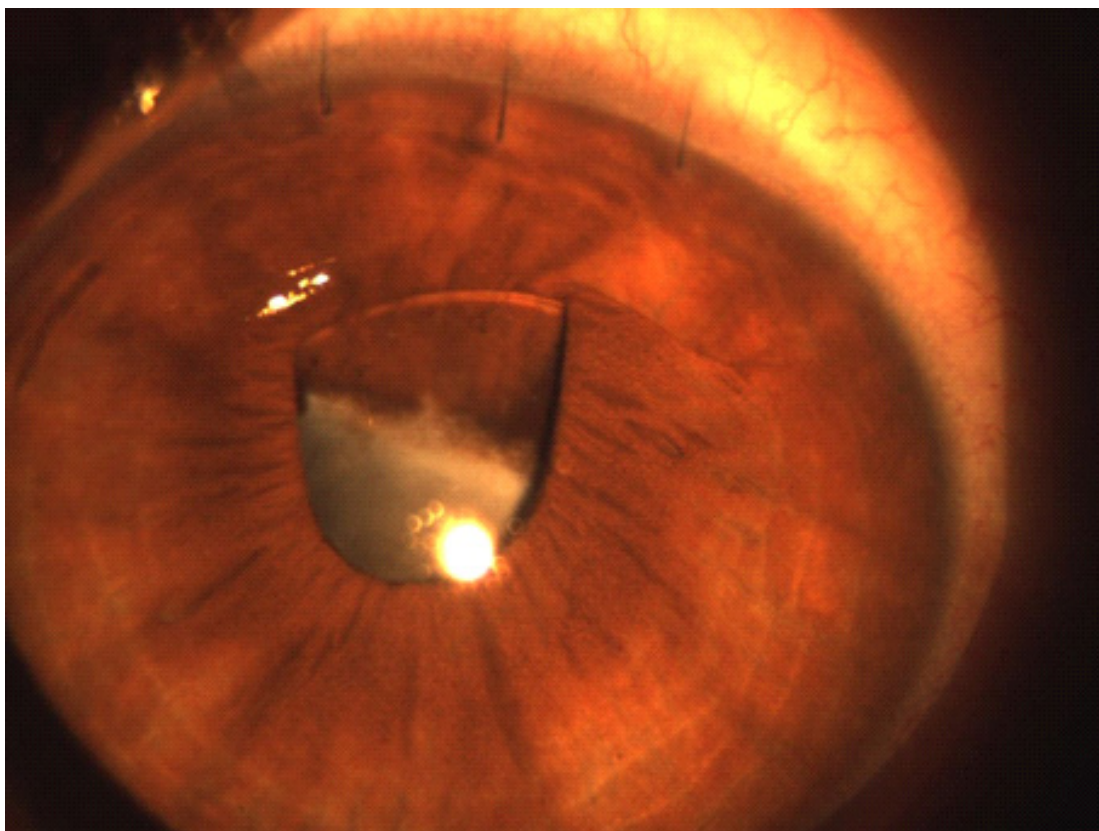


Figure 1: Intra-ocular lens displaced into anterior chamber of eye in a 50 years old man.

INTRA-OCULAR LENS DISPLACEMENT

A 50 years old man presented with visual impairment two months after undergoing extracapsular cataract extraction with intra-ocular lens (IOL) implantation. The IOL is displaced to the anterior chamber superiorly. The iris is seen abnormally adherent to the leftover posterior capsule, restricting space in the posterior chamber and thus pushing IOL forwards into the anterior chamber.

It is not uncommon to see posterior synechiae (adhesion of iris to the anterior surface of crystalline lens) in cases of acute anterior uveitis. But in the figure above, the human lens has been replaced by IOL and here iris is adhered not to the anterior surface of human lens but to the leftover posterior capsule of the human lens. It may be due to severe post cataract-surgery inflammation of the iris and ciliary body.

Corresponding Author:

Muhammad Marwat
Assistant Professor
Department of Ophthalmology
Gomal Medical College
D.I. Khan, Pakistan
E-mail: drmuhammad99@yahoo.com